



Southwestern Illinois RC&D, Inc.  
2005 Annual Report

## 2005 Board of Directors and Staff

### **Bond**

**Don Britt**, Bond Co. At-Large  
**George Luber**, Bond Co. Bd.  
**Lester Harnetiaux**, Bond Co. SWCD

### **Clinton**

**Darrell Brink**, Clinton Co. At-Large (Treasurer)  
**LaVerne Holtgrave**, Clinton Co. Bd. - alt.  
**John Raymond**, Clinton Co. Bd. - alt.  
**David Lampe**, Clinton Co. Bd.  
**Edwin Varel**, Clinton Co. SWCD

### **Madison**

**Richard Schrumpf**, Madison Co. At-Large  
**Hal Patton**, Madison Co. Bd.  
**Zane Schneider**, Madison Co. SWCD

### **Monroe**

**Marvin Ries**, Monroe Co. At-Large  
**Dale Haudrich**, Monroe Co. Bd.  
**Ralph Buettner**, Monroe Co. SWCD - alt.  
**Harvey Hoffmann**, Monroe Co. SWCD

### **Randolph**

**Ed Crow**, Randolph Co. At-Large (Secretary)  
**Kenny Slavens**, Randolph Co. Board  
**Stephen Gonzalez**, Randolph Co. SWCD (Chair)

### **SIMAPC**

**Kevin Terveer**, SIMAPC

### **St. Clair**

**Jonathan McLean**, St. Clair Co. At-Large  
**C. David Tiedemann**, St. Clair Co. Bd. (Vice-President)  
**Patricia Watkins**, St. Clair Co. SWCD

### **Washington**

**David Droste**, Washington Co. At-Large  
**Brent Schorfheide**, Washington Co.

Bd.

**Glenn Bowers**, Washington Co. SWCD  
**Staff**

**Ed Weilbacher**, Coordinator \*  
ed.weilbacher@il.usda.gov

**Yvette Dulle**, Program Assistant \*  
yvette.dulle@il.usda.gov

**Dave Eustis**, Operations Manager  
dave.eustis@rcdnet.net

**Roberta LaSalvia**, Accountant  
roberta.lasalvia@rcdnet.net

\* USDA/NRCS Staff

### **The Land Conservancy (TLC) Staff**

**Steve Black**, Coordinator  
steveblack@swircd.org

**Linda Wegrzyn**, Marketing Specialist  
tlc@swircd.org

### **GIS Resource Center Staff**

**Julia Cole**, Coordinator  
julia.cole@rcdnet.net

**Sharie Heller** Technician III  
sharie.heller@rcdnet.net

**Jenny Reiman** GIS Planner  
jenny.reiman@rcdnet.net

### **Urban & Community Forestry**

**Paul Wierzbicki**, Urban Forester  
paul.wierzbicki@rcdnet.net



# Table of Contents

Chairman's Report	4
Coordinator's Report	5
Operations & Administration	6
Agriculture	7
Outreach	8
Natural Resource Management	9
Recreation	10
Growth	11
Southwestern Illinois GIS Resource Center	12
The Land Conservancy	13
Urban Forestry	14
2005 Council & Staff	15



## Southwestern Illinois RC&D, Inc.

406 E. Main  
 Mascoutah, IL 62258  
 618-566-4451  
 618-566-4452 fax  
[swircd@swircd.org](mailto:swircd@swircd.org)  
[www.swircd.org](http://www.swircd.org)

## The Land Conservancy (TLC)

406 E. Main  
 Mascoutah, IL 62258  
 618-566-4451  
 618-566-4452 fax  
[tlc@swircd.org](mailto:tlc@swircd.org)  
[www.swircd.org](http://www.swircd.org)

## Southwestern Illinois GIS Resource Center

406 E. Main  
 Mascoutah, IL 62258  
 618-566-9493  
 618-566-4452 fax  
[gis@swircd.org](mailto:gis@swircd.org)  
[www.swircd.org](http://www.swircd.org)

The Southwestern Illinois RC&D, Inc. is a not-for-profit corporation formed in 1989 to address regional natural resource concerns to help find ways to solve regional issues and also to assist in the development of the natural resources for the betterment of the community.

In 1991, the Secretary of Agriculture through the Natural Resources Conservation Service (formerly Soil Conservation Service) designated the Southwestern Illinois RC&D, Inc. to receive technical and financial assistance to work on the issues identified in Southwestern Illinois RC&D's application.

Since 1989, the Council has worked on many and varied projects. Accelerated assistance occurred with the establishment of the Southwestern Illinois RC&D, Inc. office in Mascoutah in 1991. The accomplishments highlighted in this report are as a result of countless hours of volunteers and of the office support of the Southwestern Illinois RC&D.

The Southwestern Illinois RC&D, Inc. is a 501(c)(3) not-for-profit corporation as classified by the IRS. All donations made to the Southwestern Illinois RC&D, Inc. are charitable contributions. The Southwestern Illinois RC&D, Inc. has its IRS 990 Form and audit available for public review during normal business hours.

Technical assistance is provided to the Southwestern Illinois RC&D, Inc. through USDA-NRCS.

## Chairman's Report by Stephen E. Gonzalez

The Southwestern RC&D through due diligence and hard work is meeting the needs of the people in the region we serve. I believe that a single thought or idea is one of the most single powerful tools we possess. It can be world changing! The SWIRC&D through its' mission to address regional natural resource concerns and improve the quality of life in the area has proven itself to be a consistent performer. Our ability to partner and sometimes bring diverse people together for community needs is an accomplishment that as a board we can take pride in.



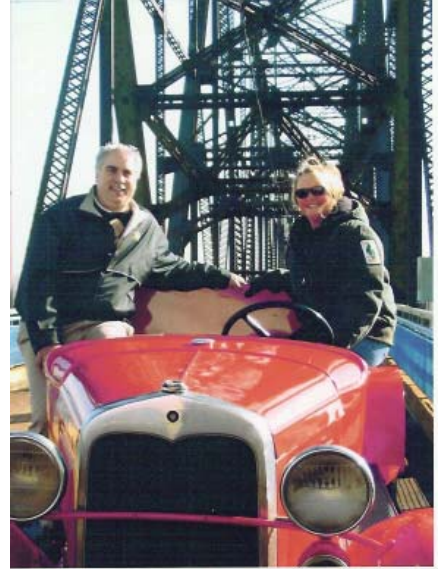
This year I was honored to be involved in the dedication of the Middle Mississippi River National Wildlife Refuge and headquarters building in Rockwood Illinois to the U.S. Fish and Wildlife Service. The 3,230 acre dedication was held at Fort Kaskaskia State Park which overlooks the Kaskaskia Island and the confluence of the Kaskaskia River in Randolph County. It was a very fitting place because a lot of early 1700's French, British, and American history happened there. Within eyesight of where we stood was probably the first capital of the Illinois Territory in 1809 which became the first capital of the State of Illinois in 1818. Devastating floods in the 1800's finally claimed where the Kaskaskia Statehouse once stood and the mighty Mississippi River now flows through the site. Fast-forward to 1993 and another horrific flood left us with more history to write that being The Middle Mississippi River National Wildlife Refuge. The focus of the news media on the 1993 flood and particularly this region also focused the American Land Conservancy to concentrate its' efforts of restoring habitat and land preservation in the middle Mississippi corridor. You could truly say something good came out of a devastating flood event for so many. They have purchased land from willing landowners in their efforts to restore viable ecosystems along the river.

Now let's take a step back. The RC&D the previous year developed a Coordination Plan for restoration efforts, on both private and public lands with a group called the Middle Mississippi River Partnership for that region. During that same time frame in 2004 the American Land Conservancy (ALC) needed help in securing 720 acres on Rockwood Island. The bluff side property now is home to the U.S. Fish and Wildlife Service Building. Elizabeth Cisar and the Illinois Clean Energy Community Foundation financially supported this effort. In addition to providing a Coordination Plan our staff provided GIS data analysis and maps for land restoration and preservation, resource planning and water quality information. Now those are small projects that ended up supporting a grand one. I would like to graciously thank all the staff who was instrumental in this on going project. I hope that Randolph County capitalizes on this resource.

Being involved in many projects that influence good things in communities is worthwhile to belong to and I have only talked about one. We have many accomplishments to be proud of. When I travel upstate to the State Association meetings everyone is interested in what's new at the SWIRC&D. Sometimes I feel this RC&D cuts the path and the rest follow. We have a very professional staff and they should all be commended. It is said you are who you associate with in life. It is a pleasure and honor to work with the staff and to be your chairman. I have learned many things and made many friends and I thank you.

As I close I'd like to thank all the board members for their valuable input and direction. I'd like to say friends with a cause! When I was in Washington D.C. on the hill I made it my point to inform the Congressmen that I was a volunteer taking time out of my schedule to support RC&D in this Country. Government has a role to play in a healthy rural community. RC&D's are that delivery system for securing grant and foundation monies to help people in various regions of this Country. Belonging to the Southwestern Illinois Resource Conservation and Development is a mirror of what I find important in my life. Family-Community-Work Ethic-Values! I hope you feel the same. I cannot thank you enough for being involved or

# Coordinator's Report by Edward J. Weilbacher



## Operations by David C. Eustis

Mission- Southwestern Illinois RC&D, Inc. is a not-for-profit corporation, formed in 1989, to address regional natural resource concerns within Bond, Clinton, Madison, Monroe, Randolph, St. Clair and Washington Counties, in Illinois.

### Southwestern Illinois RC&D, Inc. – Utilized or Underutilized?

Over the past five years, the Southwestern Illinois RC&D, Inc. Council has made a significant investment in the overall capacity of the organization. While there has been a direct and proportionate increase in our activities as a result of this investment, the RC&D remains an underutilized resource within the region. Why is this?

First, the “Resource Conservation and Development Program” is foreign language to most, probably due to each Council across the nation (375 total) having varying missions and program activities. Lack of continuity between Councils makes it difficult to recognize successes, identify programmatic priorities, and measure specific contributions to communities.

Second, as a non-profit organization, limited funds are available to the organization for planning, promotion, and other administrative activities. Grantors prefer to donate to specific project activities with “sexy” goals; limiting funds directed towards administrative purposes even though this ultimately weakens the non-profit, as well as their ability to implement future projects.

Third, parochialism exists in today’s society, and all too often planning for, or implementing projects and/or activities on a regional scale isn’t the chosen method. While most leaders generally accept that partnerships and collaborative efforts lead to the most successful projects, there continues to be hesitancy towards the sharing of data, regional planning, and implementing multi-jurisdictional projects.

In order to overcome these obstacles, the RC&D Council, sponsors, staff, and partners must all work together to better understand the existing capacity of the organization, as well as what needs exist within the region which the organization can address. In doing so the RC&D will be even better suited to assist and/or lead projects within the region. The benefit to our sponsors and staff is that it is far easier and more cost effective to support one intermediary service provider within a region than it is to support multiple, smaller entities that provide like services.

As the RC&D works to update its Area Plan (5-year Strategic Plan) in 2006, it is important that all entities that we serve: (1) participate in the planning process; (2) identify new opportunities within existing RC&D resources; and (3) identify new areas in which the RC&D should focus efforts. Only through participation in this planning process will you be able to fully utilize the capacity of the Southwestern Illinois RC&D, Inc.



### Vision

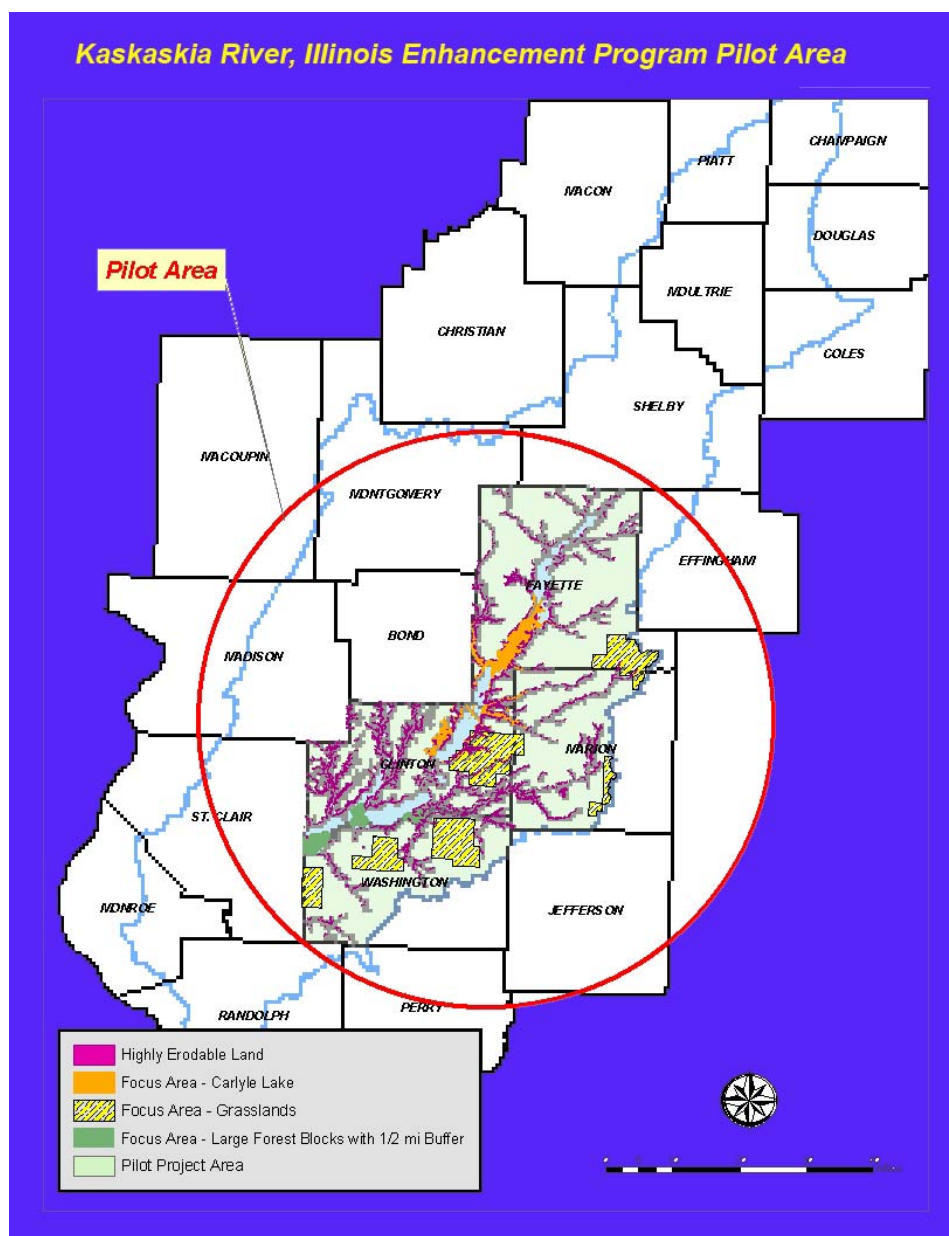
Southwestern Illinois RC&D, Inc. will develop and support partnerships to assist in the protection and sustainability of the natural resources for the betterment of the region. Program efforts will be directed towards: Agriculture, Economic Development & Redevelopment, Education and Outreach, Natural Resource Management, Outdoor Recreational Opportunities, Regional Growth Management and Environmental Resource Areas.

## Agriculture

Agriculture efforts will be directed towards preserving the family farm, protecting prime farmland, diversifying farm enterprises and redeveloping the rural economy."

Southwestern Illinois RC&D, Inc. Long Range Plan, 2001

RC&D staff had the opportunity to lead the Kaskaskia Watershed Association Technical Committee in the development of a Conservation Reserve Enhancement Program proposal. If approved by the State of Illinois and the Farm Service Agency, this would be the second authorized CREP area within the state (Illinois River). To date the program has protected over 100,000 acres within the Illinois River watershed, and 650,000 acres nationwide. The Kaskaskia proposal will focus on improving water quality, reducing erosion and sedimentation, increasing the connectivity of designated large-forest blocks, and reestablishing grassland areas within specific focus areas.



## Outreach

Education and Outreach efforts will be directed to engage youth, concerned citizens, project partners, agency staff as well as elected officials in the development of all programs undertaken.

Southwestern Illinois RC&D, Inc. Long Range Plan, 2001

The RC&D assisted the Middle Mississippi River Partnership (16 members, representative of state and federal agencies and non-profit organizations) in the development of a Coordination Plan, which will be used to protect and/or create additional wildlife habitat within the river corridor from the confluence of the Missouri River to the confluence of the Ohio River. The final document defines partnership goals, activities, programs, as well as a significant amount of GIS data that will assist partners in determining their future restoration needs.



### Ecosystem Partnerships

In 2005 the RC&D provided administrative services to three IDNR C2000 Ecosystem Partnerships, American Bottom, Lower Kaskaskia/Silver Creek, and Kaskaskia River/Shoal Creek. Collectively, these partnerships submitted a total of 16 applications, requesting a total of 1,322,791 in C2000 funds, and providing \$445,586 in local match. In November, eight grants were awarded totaling \$160,096. Members of both the American Bottom and Lower Kaskaskia/Silver Creek Ecosystem Partnerships also participated in completing the Southwestern Illinois Resource Plan.

### Kaskaskia Outreach

As in previous years, the RC&D provided significant outreach to the Kaskaskia Watershed Association. In addition to assisting with the development of a Conservation Reserve Enhancement Program, we assisted in developing language for the Water Resources Development Act and the Kaskaskia River Watershed Restoration Act. We also provided support for the Annual Summit, in which 160 people attended, as well as the Watershed Association's participation in the Whitehouse Conference on Cooperative Conservation.



## Natural Resources

The Natural Resource Base, including fish, wildlife, & associated habitat, is maintained and restored as needed to protect desirable population levels.  
Southwestern Illinois RC&D, Inc. Long Range Plan, 2001

In keeping with the mission to restore and protect our natural resource base, the RC&D has undertaken a number of habitat improvement projects over the past year. First, we have assisted Ducks Unlimited and a number of other project partners in implementing the Lower Kaskaskia Wetlands Restoration Project. This effort involves the restoration of 94 acres of shallow emergent wetland habitat along the lower Kaskaskia River in Randolph County. Additional wetland work was completed in Washington County, on the property of Glen Schuetz. Seasonal wetlands, or vernal pools, (see photo), are critical breeding habitat for a number of amphibians, crustaceans, and insects.

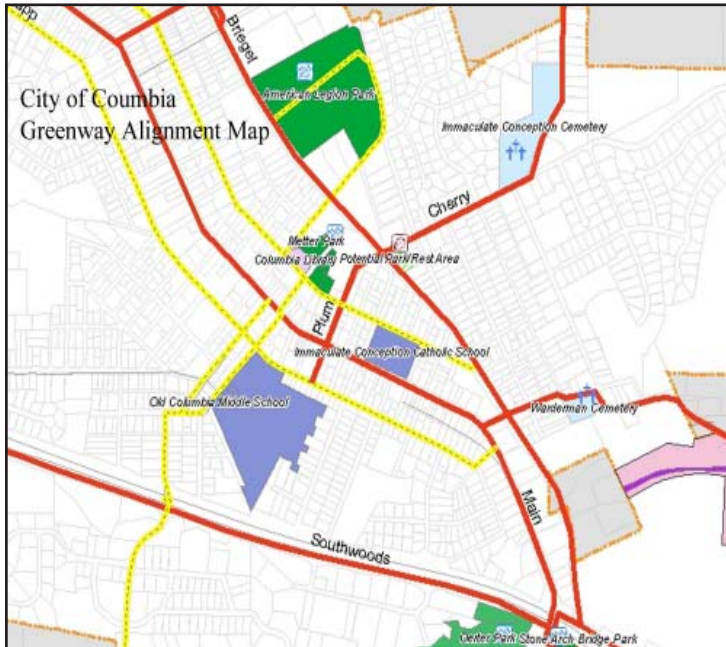


Work to protect remnant hill prairies and the forested bluff line in Southern St. Clair, Monroe and Northern Randolph Counties is on-going. A total of 12 Illinois Natural Area Inventory sites exist within this corridor, and through grants provided by the C2000 Ecosystem Partnership Program, 10 sites have had some level of restoration work completed. However, because of the significant amount of native prairie in this corridor, the efforts of the volunteers, and IDNR/INPC have impacted only an estimated 25-30% of the total prairie coverage

within this area. Much more work is needed to treat new sites. More than half of the untreated sites are in very serious decline, with at least a quarter of them vulnerable to being lost within the next 5 to 10 years without resource management. INPC have already documented 4 prairies that have been completely lost since 1976.

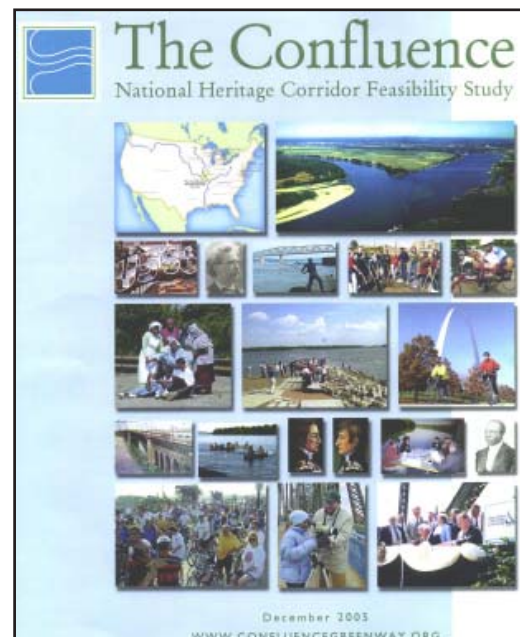
## Recreation

Outdoor Recreational Opportunities are increased throughout the region through the development of parks, greenways, conservation easements & the overall protection of open space  
Southwestern Illinois RC&D, Inc. Long Range Plan, 2001



The Southwestern Illinois GIS Resource Center has been working with the City of Columbia on developing a community greenway and bike map. The first step in this project was the collection of GIS data. Public data layers such as parcels, floodplain, land use were collected and displayed together with potential trail alignments. Representatives from the City of Columbia have added additional information to enhance the display map. The final product will be a large-scale wall map of proposed trail alignments throughout the City of Columbia. This planning process will assist the city in future park and recreation grant applications, as well as educating the general public regarding potential trail alignments.

After years of talking about the idea of creating a Heritage Area for the Confluence Greenway, Confluence partners finally took some serious and positive steps towards achieving that goal. The Confluence Greenway Master Plan developed in 2001 called for the establishment of a Heritage Area. To jump-start the process a detailed and thorough Feasibility Study was prepared and submitted to the National Park Service in December 2005. Senator Talent has since introduced legislation to create the Confluence National Heritage Area. The RC&D provided technical assistance to the effort to insure that the resources were adequately described. Steve Gonzalez, RC&D Chairman, serves on the Heritage Corridor Steering Committee to direct the actions needed to secure the Heritage designation. 2006 will be a pivotal year as to the ability to secure the designation by the time the Lewis and Clark celebrates the 200<sup>th</sup> anniversary of their return to St. Louis.



## Growth

Southwestern Illinois RC&D will participate in the research and dialogue on Regional Growth Issues, & encourage public involvement and develop proposals/programs to address urban sprawl.  
Southwestern Illinois RC&D, Inc. Long Range Plan, 2001

The Southwestern Illinois Resource Plan is a new approach for land use planning in our region. Using GIS technology to compile planning documents, resource data, and projections for future development allows planners, resource managers, and local leaders to visualize and analyze the long-term impacts of land use choices. This example shows which areas are likely to develop over the next 25 years and which areas of sensitive sinkhole/karst terrain may be impacted by that development. Examples like this one are the starting point for regional dialogues about land use planning and growth management in Southwestern Illinois.



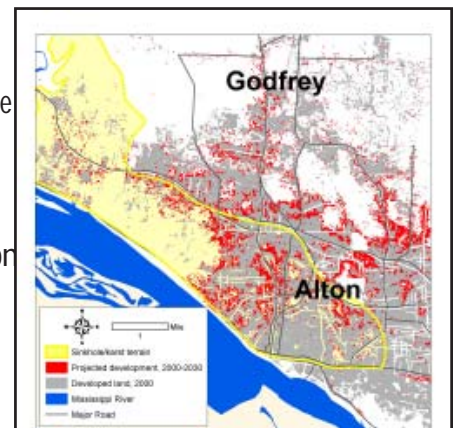
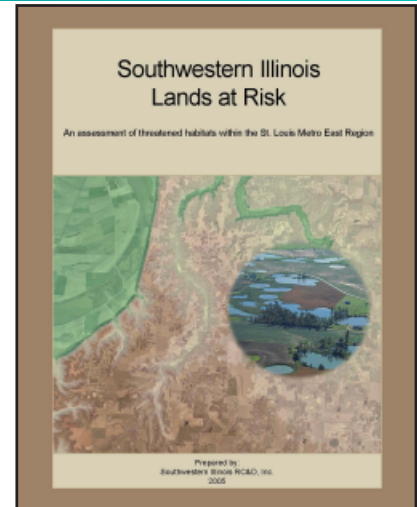
The Middle Mississippi River Partnership is a collaboration of sixteen federal/state agencies and not-for-profit organizations that have a common goal of restoring and enhancing the natural resources of the river corridor from St. Louis, Missouri to Cairo, Illinois. Southwestern Illinois RC&D facilitated meetings of the Partnership to assist the group in developing a Coordination Plan and conducted public meetings and stakeholder interviews throughout the planning process. The completed plan identifies goals and strategies for the partnership, and includes maps and GIS data that can be used by members of the partnership to tell the story of one of our region's most significant resources.

The Southwestern Illinois Lands at Risk project utilized input from existing GIS layers as well as local resource managers to develop a comprehensive listing of areas within the region that are of high resource value and are under threat of conversion to agricultural, residential or commercial use. As a result of this effort, we now have a powerful, interactive reference library that can be utilized by resource managers, agency staff, foundations, and other non-profits to further the protection of key resource areas within the Metro East.



Funding to complete this initiative was provided by The McKnight Foundation.

The Southwestern Illinois GIS Resource Center assisted the Madison County Stormwater office in depicting parcel lines associated with project areas defined within the East St. Louis & Vicinity, Illinois Ecosystem Restoration & Flood Reduction Project. This process will assist the county in completing the acquisitions necessary to move the ecological restoration component forward. When completed this project will restore 1,700 acres of bottomland forest, 843 acres of wetlands, 460 acres of lake, 10.4 miles of streams, and create 131 tributary stream detention basins.



# Southwestern Illinois GIS Resource Center

Southwestern Illinois GIS Resource Center was founded in 2001. Our mission is to provide geographic information system services and education in support of the RC&D vision.

## What is a “regional GIS Center”?

While a Geographic Information System (GIS) can be developed and maintained on an individual basis, there are definite advantages in maintaining a GIS regionally. To understand these advantages, we must first look at what exactly a regional GIS Resource Center is.

A regional GIS Resource Center **collects existing data**. There is a wealth of existing data layers available from government agencies, such as the United States Geological Survey, the Illinois Department of Transportation and the Illinois Department of Natural Resources. These layers include aerial photography, topographic quad maps, landcover, floodplain boundaries, roads, streams and population data. In addition, a number of administrative boundaries exist, including, watersheds, planning areas, legislative districts, or civil townships.

A regional GIS Resource Center **updates and stores data**. Often, by the time that a data set is received from a state or federal source, the information is already out of date. School and legislative districts, road systems, parks and trails all change frequently within high-growth areas and it is necessary to update this information. In addition, the data sets must be standardized within a common projection, and stored in a manner in which they can be called upon quickly in order to complete a project.

A regional GIS Resource Center **creates and converts data**. Often, the development of a new data layer will allow us to isolate an issue, depict a particular situation, or illustrate a future scenario. In addition, information such as utility lines created in AutoCAD, can be readily converted into a GIS.

A regional GIS Resource Center provides **technical expertise and training**. GIS is a specialty field, with specific software, equipment needs and technical proficiency required. A regional GIS Center promotes wide deployment of GIS within the region, encourages standards and infrastructure, and provides an affordable mechanism for training GIS staff and department heads.

A regional GIS Resource Center provides **services** that meet your needs. Whether your needs include the development of presentation materials, the conversion of data, or digitally capturing features with a GPS unit, a regional GIS Center can assist. The cost for these services is often well below what it would cost an individual entity to purchase equipment and then complete the same activity.

A regional GIS Resource Center promotes the **sharing** of information. Avoiding redundancy in the development and maintenance of GIS data reduces costs, adds value, and encourages wider use of the overall system. The creation of a regional GIS database results in a resource that can be viewed as an open community resource. Often individual entities are overwhelmed with the time and expense of maintaining data, resulting in a desire to recover costs rather than promote the use of data. By acting as a repository of data, a regional GIS Center can centralize access and enhance awareness of existing data within the user community.



# The Land Conservancy (TLC)

The mission of The Land Conservancy (TLC) is to protect agricultural, forest, and other natural lands in order to provide for open space, landscape diversity, sustainable agriculture, wildlife habitat, and conservation benefits for present and future generations.

## Special thanks to our donors for 2005

### Corporate

ASC Foundation \$25,000  
Pioneer Hi-Bred International, Inc. \$5,000

### Individual

Mary Biernot  
Richard Bossler  
Sally Brown  
Carl and Penelope Daubach  
Dave & Tamara Eustis  
Paul Evans  
Melvin Feig  
Stephen Gonzalez  
Edna Grench  
Miriam Huelsmann  
Nancy Larson  
John & Virginia McCall  
Stephen Mudge & Brenda Ludwig  
Ray & Mitze Nitzsche  
Jack Norman  
Gene & Wanda Pitra  
Glen & Linda Schuetz  
Patricia Watkins  
Ed & Kathi Weilbacher

Over the past year TLC obtained over \$30,000 in grants, donations, and individual contributions to expand outreach and information efforts leading to conservation easements. Information meetings were held in Edwardsville and O'Fallon and presentations were made to several agricultural and environmental organizations and groups in the region. A membership brochure was developed and distributed to begin the process of individual support for TLC activities. Linda Wegrzyn, part-time Marketing Specialist for TLC, provided the leadership for developing the many excellent brochures and publications as well as the professional newsletters throughout the year.

A special landowner outreach effort was initiated in the karst sinkhole plain area of St. Clair Co. with some financial support from the County Board. Field days were held to tour the Willoughby Heritage Farm in Collinsville in October and the Brinkley-Gonterman Memorial Hill Prairie Nature Preserve in November. 20 landowners were visited to provide information on the benefits of a conservation easement on their land. Three landowners plan to proceed with a conservation easement in 2006.

## Field Day to View Hill Prairies in Monroe and Randolph Counties

In November TLC hosted a field day to look at hilltop prairies and forested areas along the bluffs in Monroe and Randolph Counties. A local alliance entitled CLIFFTOP (Conserving Lands in Farms, Forests, Talus, or Praires) has been organized to focus on protecting and conserving the Mississippi River bluff lands from Columbia to Prairie du Rocher. This area contains 33,000 acres of mostly contiguous forest and hosts 4,000 acres of designated Illinois Natural Area Inventory sites. Within these bluffs are nearly half of Illinois' remaining loess prairies.



INPC Staff, Debbie Newman, explains the ecosystem of the loess hill prairie

## Urban Forestry by Paul Wierzbicki

Did you know that city trees are one of the few infrastructure investments that increase in value over time? In fact, USDA Forest Service research tells us that for every dollar spent on city trees is worth three times that investment in energy savings, stormwater runoff reduction, higher property values, and cleaner air. <http://cufr.ucdavis.edu>.








Did you know that city trees are also a social investment? University of Illinois research has shown that residents in greener surroundings report lower levels of fear, fewer crimes, less mental fatigue, and a greater sense of community. [www.herl.uiuc.edu](http://www.herl.uiuc.edu).

Awareness of city tree benefits has been a driving force for increasing the level of community forestry awareness in Illinois. Now, between a partnership with Southwestern Illinois RC&D, USDA Forest Service, and Illinois Department of Natural Resources, southern Illinois communities have a local resource available to help them manage their community's trees. In 2001, this collaboration has resulted in 79 southern Illinois communities receiving free technical assistance with tree selection, planting, maintenance, tree ordinances, urban forestry plans, tree inventories, Arbor Day programs, the Tree City USA program, urban forestry grants, and city staff trainings. This is just the beginning!

In 2006, the Southwestern Illinois RC&D Urban Forester will continue to expand local forestry partnerships and provide technical assistance to municipalities across the southern 42 counties of Illinois. The goal is simple, match community managers and volunteers to the resources they need to prevent tree related concerns before they happen. The bottom line is that properly maintaining trees today results in safer communities and less maintenance cost tomorrow.



### The Fundamentals of City Forestry

-  Tree Ordinance
-  Urban Forestry Plan
-  Tree Inventory
-  Arbor Day Program
-  Routine Pruning
-  Tree City USA
-  Staff & Volunteer Training



# Administration

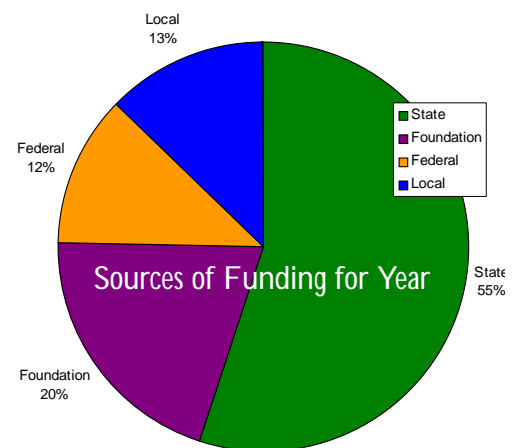
Southwestern Illinois Resource Conservation and Development, Inc.			
Statement of Financial Position			
As of December 31, 2005			
	2005	2004	
<b>Assets</b>			
Cash and cash equivalents	274,184	646,268	
Accounts Receivable	80,577	113,844	
<b>Total Current Assets</b>	<b>354,761</b>	<b>760,113</b>	
Property and Equipment	68,323	71,461	
Less Accumulated Depreciation	59,015	54,287	
<b>Total Property and Equipment</b>	<b>9,308</b>	<b>17,174</b>	
<b>Total Assets</b>	<b>364,069</b>	<b>777,287</b>	
<b>Liabilities and Net Assets</b>			
Accounts Payable	806	5,522	
Accrued Expenses	1,171	829	
Deferred Revenue	27,476	374,749	
<b>Total Current Liabilities</b>	<b>29,453</b>	<b>381,100</b>	
Net Assets			
Unrestricted	200,422	251,068	
Restricted	134,194	145,119	
<b>Total Net Assets</b>	<b>334,615</b>	<b>396,186</b>	
<b>Total Liabilities and Net Assets</b>	<b>364,069</b>	<b>777,287</b>	



**Administration:** Southwestern Illinois RC&D, Inc. utilizes an accrual accounting system, incorporating MIP Fund Accounting Pro, a Sage software product, to accurately account for all revenues and expenses for the organization. MIP Fund Accounting Pro is also used to create all necessary reports for daily, monthly and yearly reporting requirements. While grants are managed as a whole through two primary bank accounts, the MIP software allows for independent tracking of individual grants.

The organization requires an annual independent audit, which in FY 2004 was performed by Schmersahl Treloar & Co. of St. Louis, Missouri. The audit includes an assessment of the accounting principles used, as well as an analysis of the overall financial position of the organization. A copy of the FY 2004 Independent Audit is available by contacting Southwestern Illinois RC&D, Inc.

A Financial Procedures Manual has been created to document the major sources of input to the financial statements. This manual assists in standardizing the steps to be taken in processing cash receipts, cash disbursements, bank reconciliations, purchasing, payroll processing, employee expense reimbursements, asset purchases and leases. The use of standardized accounting procedures and a computerized accounting software helps to insure accuracy, adherence to accounting controls and timely reporting of financial status.



## Glen Schuetz recipient of Lt. Gov. Pat Quinn 2005 Environmental Hero Award

On Thursday, December 29, 2005, Lt. Governor Pat Quinn presented 2005 Environmental Hero Awards to 13 citizens, cities, and groups in recognition of their commitment to providing and maintaining a healthful environment for this and future generations in Illinois. Glen Schuetz, USDA Earth Team Volunteer was one of the recipients of this award.

Glen, a retired landowner, has put much effort into protecting the state's largest contiguous bottomland hardwood forest. In addition to implementing a number of conservation programs on his own land, including: the Conservation Reserve Program, Hole in the Doughnut, Wildlife Habitat Improvement Program and forest management plans, Glen is a board member with the Original Kaskaskia Area Wilderness and the Kaskaskia Watershed Association.

Glen logged more than 100 hours last year treating the grounds with chemicals to prevent the invasive garlic mustard plant from taking over the land. He buys his own chemicals and has obtained three grants to do the work that fights several plants that "upset the natural balance of things."

Glen has worked as a volunteer for the Southwestern Illinois RC&D, Inc. to improve wildlife habitat within Washington County, including performing prescribed burns on a number of landowners prairie restorations, as well as installing wetlands, native season grasses and bottomland forest seedlings.

Glen has also assisted researchers from the University of Illinois in studying the decline of neo-tropical songbirds within the Kaskaskia River corridor, being instrumental in the researcher's ability to gain access to private property within the corridor. Glen also worked with diligence to gain authorization for the Forest Legacy program within Southwestern Illinois. And he has also worked with the Washington County SWCD to obtain three C2000 grants to control garlic mustard, an invasive species, within Washington County.



Glen Schuetz (l) and Lt. Gov. Pat Quinn (r)